

SATC welding fume extractor with torch and arm

🔧 Sectors [Welding](#),

🔧 Applications: [Mobile](#)

🔧 Issues [Fumes](#)

COD: SATC3A00000000



SATC3A welding fume extractor to serve a welding station ready for use.

Detailed description

Features

SATC3A welding fume extractor serving a ready-to-use welding station, supplied in a kit consisting of:

- Aspirator trolley and wire puller;
- Fume extractor 1.5kw single-phase automatic complete with 5 stages of filtration in class 10 to 98% at 0.3micron);
- Balanced flashlight holder arm (total useful working range 8-9 mt);
- Welding flashlight with fume extraction (100% working cycle) lung. 5 mt from 250-300-350 (depending on the welding machine).

Main advantages of this solution:

- Complies with the regulations for safeguarding the physical integrity of personnel;
- Greater ergonomics, thanks to the arm reduces exposure to biomechanical overload of the operator;
- Operator health protection, smoke capture at the source of the flashlight occurs before the respiratory zone ensuring a TLV (Threshold Limit Value) of 1.5-1.8mg/mc;
- Workstation tidiness and safety, with elimination of floor obstructions (cables, pipes, etc.);
- Economic recovery of the investment due to less flashlight maintenance (-60%); Increased arc on (+10/15%) and savings of 20/30% in heating, per welding station, due to the lower amount of air treated compared to traditional suction systems.

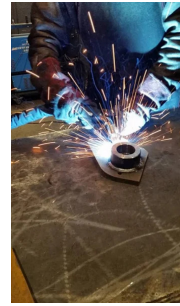
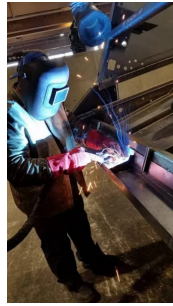
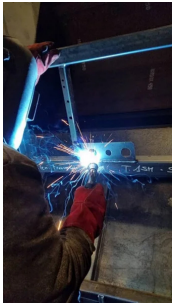


Technical Data

Code	Power kW	Arm length meters
SATC3A00000000	1,5	8-9



Photogallery



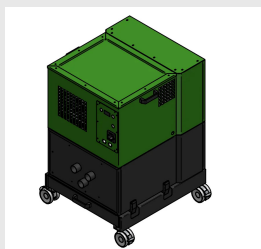
Accessories



High pressure welding fume extractor GTC1A22

GTC1A2200000000

GTC1A22 mobile welding fume extractor with integrated micrometric abatement filtration, for optimum high-pressure fume extraction through two simultaneous welding suction torches or from other applications requiring low-section piping.



High pressure welding fume extractor VXH22

VXH102200000000

VXH22 welding trolley mobile fume extractor of the latest generation, with final filtration HEPA H13 and subsequent certification W3.



ESAT high-pressure welding fume extractor

ESAT000000000000

High-pressure vacuum cleaner ESAT, to be connected to max. 2 suction torches of the SAT line, specifically for industrial use in continuous operation (100% duty cycle) thanks to the robust aluminium blower/turbine with three-phase motor of leading brand. Mounted on trolley with wheels.



Related products



SAT300 air-cooled suction torch

SAT300000000000

The SAT welding fume **suction flashlight** system from Secureair® is an effective, cost-effective and alternative solution to traditional solutions. The **SAT300 model** is a lightweight suction flashlight, ideal for sheet metal processing with 1-1.2mm wire

