

Replacement filter kit S1-S2-S3 WFU purifier

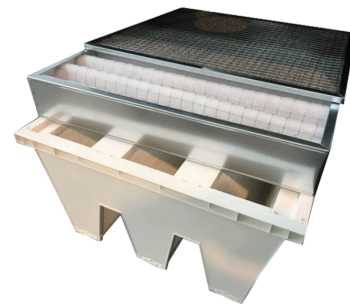
📌 Sectors

📌 Applications: **Mobile**

📌 Issues **Fumes**

COD: WFU18WKS1S2S300

Replacement filter kit S1-S2-S3 (no carbon) for WFU hanging purifier



Detailed description

Filtration

stage 1: metal anti-spark filter eff. G3

stage 2: acrylic filter eff. G4 according to EN 779:2012

stage 3: absolute filter eff. H13 $\geq 99.95\%$ @ MPPS acc. to EN 1822:2009



Technical Data

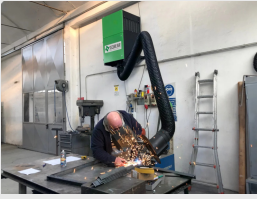
Code	Stage 1 filter	Stage 2 filter	Stage 3 filter
WFU18WKS1S2S300	Metal non-sparking filter eff. G3	Acrylic filter eff. G4 according to EN 779:2012	Absolute filter eff. H13 $\geq 99.95\%$ @MPPS acc. to EN 1822:2009



Photogallery



Related products



Wall-mounted welding fume extractor WFU with superFLEX arm

WFU18BF00000000

Wall-mounted welding fume extractor WFU18 filtration efficiency H13 99.99%.

