

MFU-HW welding fume extractor with superflex arm

📌 Sectors [Welding,](#)

📌 Applications: [Mobile](#)

📌 Issues [Fumes](#)

COD:

MFU21HWXF000000



Mobile extractors for welding fumes and micro-dust, high performance for professional use, with HEPA H13 99.99% absolute filtration



Detailed description

Don't breathe in **fumes and micro-dusts released into the environment during welding!** Rely on HEPA H13 filtration to abate welding fumes and micro-dusts by using an **MFU welding fume extractor**, specifically designed to extract and filter fumes and micro-dusts generated by metal welding processes, filtering 99.99% of particles over 0.3µm. MFU series mobile extractors represent the ultimate in technology for the drastic reduction of risks derived from fumes and micro-dusts within professional work environments. The pollutants are quickly sucked in at the source thanks to the high-capacity hood and are then filtered 99.99% thanks to HEPA technology, a guarantee of micro-dust abatement from 0.3µm and up.

For this reason, the MFU welding fume extractor is W3 certified compliant for the filtration of carcinogens as per EN 15102.

Technical features

- High suction capacity: 1500 cu m/h
- Compact and handy structure;
- Self-supporting suction arm with SUPERFLEX piping working length mt 3 or 4;
- Room air recirculation with absolute filtration H13 HEPA - 99.99%
- W3 certificate compliant for filtration of carcinogens;
- Electrical panel included on board as per EN 15102 standards;
- Indicator light for filter clogging warning;
- Hour meter for machine maintenance record keeping;
- Single-phase plug and cable with shuko socket requires no electrical installations, is ready to use;
- High-capacity suction hood with handle for easy positioning.

How it works

The welding fume extractor purifies the pollutants that pass through the system from the arm in the machine downward and are purified at 99.99% efficiency, the clean air is fed back into the room through grilles located at the bottom on the sides of the machine for maximum efficiency and energy saving.

Safety as per regulations

The clogging level of the filters is monitored by a control that alerts with a light signal when the filters need to be cleaned or replaced, so as to avoid continuing work without air filtration.

Construction

- Sturdy galvanized or painted steel support structure depending on the application, equipped with practical handles for handling;
- 4 pivoting wheels with brakes;
- Self-supporting suction arm of mt 3 or 4 depending on the model;
- Electrical panel with ventilation on/off control, hour meter and filter clogging warning light;
- Single-suction centrifugal fan in version directly coupled to single-phase asynchronous motor.





ADVANTAGES

- Fast fume extraction near the source due to high flow rate.
- Mobile: allows a variety of welding spots to be reached.
- Filtration with absolute filter eff. H13 $\geq 99.99\%$ of particles over $0.3\mu\text{m}$.
- 1500W single-phase power can be connected anywhere with a simple shuko outlet.



Advantages of purchasing with operating rental in 12/24/36 or 48 easy payments

- No down payment to be made, no pro-rata.
- First rent on average at about 30 days.
- Totally deducts royalties for IRES purposes with no obligations arising from the minimum contract term under the T.U.
- Totally deducts royalties for IRAP purposes without distinction between principal and interest.
- Basel 2 advantage: thanks to the rental, the asset used is "off-asset" and therefore does not require corresponding assets.
- All Risk insurance included in the fees to cover possible claims.
- Fixed rate for the entire duration of the transaction.

Partners **BCC Lease**

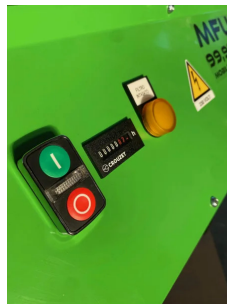
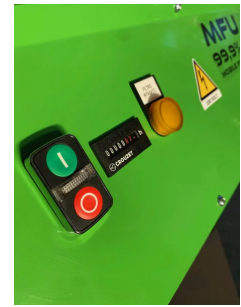
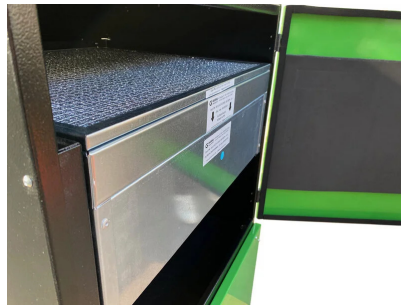
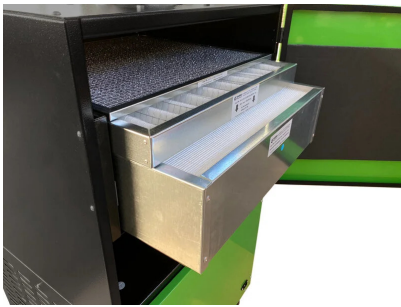


Technical Data

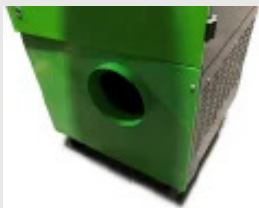
Code	Power kW	Nominal flow rate m ³ / h	Noise Db (A)	Weight kg	Operating temperature °C	Power supply V	Power supply Hz	Arm length meters	Stage 1 filter	Stage 2 filter	Stage 3 filter
MFU21HW3F000000	1,5	1500	73	102	40	220/1/50	50	3	metal anti-spark eff. G3	Acrylic corrugated efficiency G4	HEPA H13 ≥99,95% @ MPPS acc. to EN 1822:2009
MFU21HW4F000000	1,5	1500	73	102	40	220/1/50	50	4	metal anti-spark eff. G3	Acrylic corrugated efficiency G4	HEPA H13 ≥99,95% @ MPPS acc. to EN 1822:2009



Photogallery



Accessories



Filtered air outlet connection MFU

KITSCARICESTMFU

Lateral connection diam. 200 mm for hose to discharge filtered air outside from MFU purifiers all.



10kg activated carbon filter kit for MFU and WFU

MFU18WECA100000

10kg (2x5kg) activated carbon filter kit for all WFUs and MFUs 16 -18 - HW



17kg activated carbon filter kit for MFU

MFU21WECA170001

Replacement filter kit for 17 kg activated carbon filter stage - for all MFU purifiers from 2021 onward. Refillable version.



Spare parts



Metal Filter Replacement - Stage 1 - MFU-HW

Metal Filter Replacement - Stage 1 - MFU-HW only



Replacement acrylic filter - Stage 2 - MFU-HW

Replacement acrylic filter - Stage 2 - MFU-HW only



Replacement filter H13 HEPA - Stage 3 - MFU-HW

Replacement H13 HEPA filter - Stage 3 - MFU-HW only



Related products



MFU-HW welding fume extractor with red arm

MFU21HWR0000000

Mobile extractors for welding fumes and micro-dust, high performance for professional use, with HEPA H13 99.99% absolute filtration



MFU-HWF23 welding fume extractor double arm 3m

MFU21HW32F00000

Mobile welding fume extractor with superflex double arm, with filtration efficiency H13 99.99%.

