

SAT300 air-cooled suction torch

🔧 Sectors [Welding](#),

🔧 Applications: [Fix](#)

🔧 Issues [Fumes](#)

COD: SAT3000000000000



The SAT welding fume suction flashlight system from Secureair[®] is an effective, cost-effective and alternative solution to traditional solutions.

The SAT300 model is a lightweight suction flashlight, ideal for sheet metal processing with 1-1.2mm wire

Detailed description

Model SAT300 is a lightweight suction flashlight, ideal for sheet metal working with 1-1.2mm wire

The cover (1.20m) of the flashlight tube is leather with Velcro closure.

The current-carrying cable is 16 sq mm in cross-section.

The fume suction hose is made of super flexible polyurethane.

The weight of the flashlight, at 1 m from the ground, is 1.37 kg, and the air flow rate is 103 mc/h with a head of 15.40kPa.

Thanks to the flashlight with built-in fume extraction, operator protection starts directly from the pollutant source.

The flashlight prevents fumes from being dispersed into the 'work environment resulting in difficulties in capturing them, often forcing companies to have large suction systems or plants.

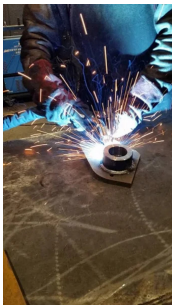
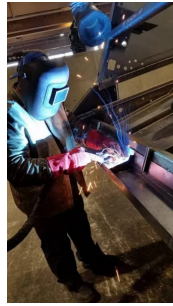
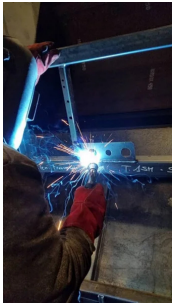


Technical Data

Code	Nominal flow rate m ³ / h	Filo mm	X 100%	Dp required	Processing	Torch weight
SAT300000000000	115	1 / 1,2	300A CO ₂ / 252A MIX	1400 mm H ₂ O	sheet metal	1.37 kg at 1 mt from the ground



Photogallery



Related products



BSMID25 balanced arm

BSMID2500000000

BSMID25 balanced welding flashlight support arm, complete with wire puller holder and fixing plate.



High pressure welding fume extractor VXH22

VXH102200000000

VXH22 welding trolley **mobile fume extractor** of the latest generation, with final filtration HEPA H13 and subsequent certification W3.



SAT350 air-cooled suction torch

SAT350000000000

The **SAT** welding fume **suction flashlight** system from **Secureair®** is an effective, cost-effective and alternative solution to traditional solutions. The **SAT350 model** is a lightweight suction flashlight, ideal for sheet metal processing with 1-1.2mm wire

