

# Purlin box H300 for STCQ Torrini

COD: PBH3STCQ0000000



Support base made of galvanized sheet metal with 0° inclination equipped with an insulating mat to ensure proper acoustic comfort and tightness.

## Detailed description

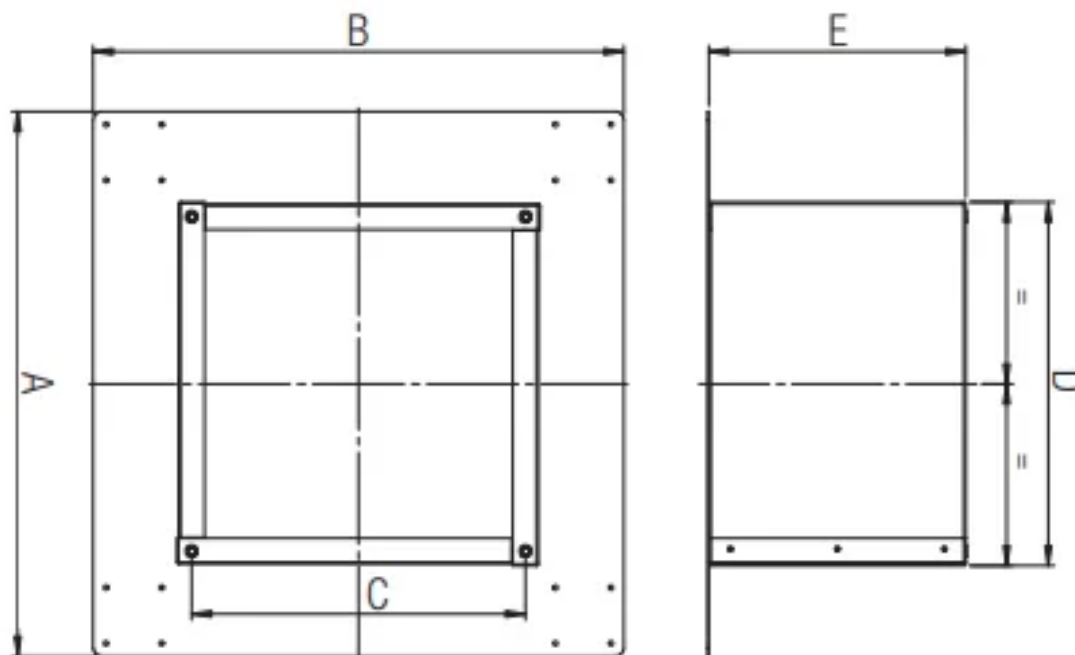
Support base made of galvanized sheet metal with 0° inclination equipped with an insulating mat to ensure proper acoustic comfort and tightness.

Used to avoid masonry or carpentry work and water stagnation near the fan.

Suitable for all **single-phase and three-phase STCQ** models.



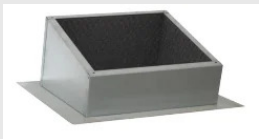
## Dimensions



Code	A mm	B mm	C mm	D mm	E mm
PB3STC●20000000	635	620	390	420	300
PB3STC●40600000	750	730	490	530	300
PB3STC●80100000	870	850	600	650	300
PB3STC●15020000	1015	990	740	790	300



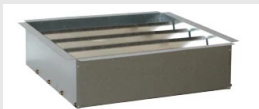
## Accessories



### Purlin box 15° for STCQ Torrini

PB15STCQ0000000

Galvanized sheet metal support base equipped with insulating mat for installation on sloping roofs at an angle of 15° to avoid masonry or carpentry work and water stagnation near the fan.



### Gravity Damper for STCQ Torrini

SRDGSTCQ0000000

Gravity damper for STCQ galvanized steel Torrini to prevent air leakage and heat loss fan off.



## Related products



### STC compact centrifugal Torrino extractor roof

STCQ00000000000

STC compact centrifugal fans for roof-tower installation are horizontal or vertical discharge (with appropriate accessory) and suitable for extracting air directly or through ductwork in environments where high head is required for commercial and industrial applications such as factories, gyms, industrial facilities, warehouses, kitchens, etc.

