

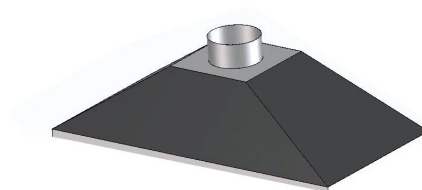
Rectangular galvanised hood CAPRETZ

🔗 Sectors [Plant Components](#),

🔗 Applications: [Fix](#)

🔗 Issues [Odours](#)

COD: CAPRETZ00000000



With regard to exhaust systems, fume **hoods** are the simplest system for the proper capture of fumes and vapors, which tend to rise upward due to the higher than ambient temperature.

Detailed description

The hoods, in this version are without extractor fan and only for industrial use (**no for kitchens**).

Proposed in several standard sizes, it can also be made to measure.

Contact our technical department.

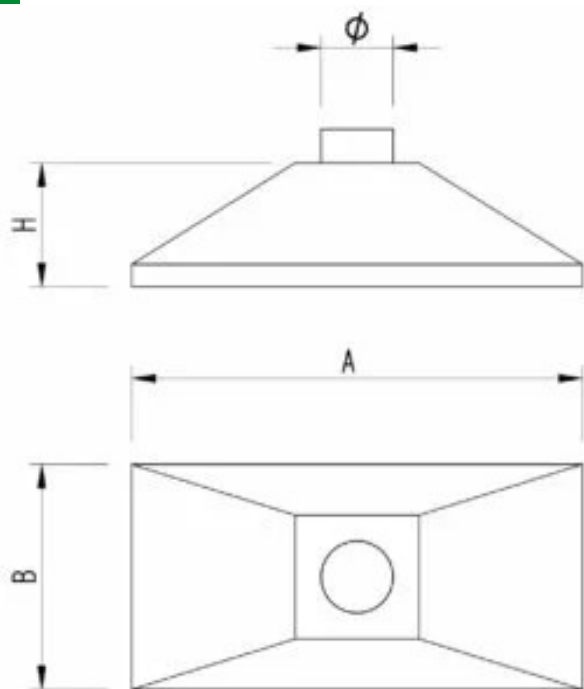
Construction

Galvanized sheet metal stapled according to UNI EN 10346 tapered at the top, bottom side bent anti-cutting inward.

In this version they are without extractor fan and only for industrial use (no for kitchens).



Dimensions



Code	A mm	B mm	H mm	Dimensions mm	Ø mm
CAPRETZ60060000	600	600	250	300x300	160
CAPRETZ80050000	800	500	250	300x300	160
CAPRETZ90060000	900	600	350	300x300	160
CAPRETZ10007000	1000	700	350	400x350	200
CAPRETZ10009000	1000	900	350	400x350	200
CAPRETZ12006000	1200	600	450	400x350	200
CAPRETZ12009000	1200	900	450	500x450	200
CAPRETZ15001000	1500	1000	450	600x500	250
CAPRETZ20001000	2000	1000	550	1000x500	250

