

# MFU-HCO fumes extractor

🔧 Sectors **Laboratories and Medical,**

🔧 Applications: **Mobile, Fix**

🔧 Issues **Odours, VOC fumes**



COD:

MFU21HCO0000000

MFU-HCO high-performance mobile wheeled fume and exhalation extractor for professional use, with 2mt suction arm, HEPA H13 99.99% absolute filtration and activated carbon

## Detailed description

MFU series fume extractors represent the ultimate in technology for the drastic reduction of risks derived from fumes and micro-dusts within professional work environments; in fact, the pollutants are quickly sucked in at the source by the high-capacity hooded arm and are subsequently filtered to 99.99% thanks to HEPA technology, a guarantee of micro-dust abatement from 0.3 µm and up.

The HCO version is specifically designed for localized extraction on casting and annealing furnaces in goldsmith workshops, but in general it can be used when **fumes, micro-dusts and odors** need to be **abated**.

The MFU welding fume extractor is W3 certified compliant for the filtration of carcinogens as per EN 15102.

### Unique features of MFU-H

- Compact and maneuverable structure;
- self-supporting suction arm with a working radius of 2 mt
- Room air recirculation with absolute H13 HEPA filtration - 99.99%
- odor filtration with activated carbon (KG 17)
- w3 certificate compliant for filtration of carcinogens;
- Electrical panel included on board as per EN 15102 standards;
- Indicator light for filter clogging warning
- Hour meter for machine maintenance record keeping;
- Single-phase plug and cable with shuko socket requires no electrical installations, is ready to use;

### Construction

- sturdy galvanized or painted steel support structure depending on the application, equipped with practical handles for handling
- 4 pivoting wheels with brakes;
- electrical panel with ventilation on/off control, hour meter and filter clogging warning light;
- single-suction centrifugal fan in version directly coupled to single-phase asynchronous motor;



## Technical Data

Code	Power kW	Nominal flow rate m <sup>3</sup> / h	Filtering efficiency %	Weight kg	Arm length meters	Motor	Activated carbon kg	Stage 1 filter	Stage 2 filter	Stage 3 filter	Stage 4 filter
MFU21HCO2BR0000	1,5 220/1/50Hz	1500	99,99 H13-HEPA	110	2	1,5 kW 220/1/50	17	metal anti-spark eff. G3	Acrylic corrugated efficiency G4	HEPA H13 ≥99,95% @ MPPS acc. to EN 1822:2009	17 kg activated carbon
MFU21HCO3BR0000	1,5 220/1/50Hz	1500	99,99 H13-HEPA	110	3	1,5 kW 220/1/50	17	metal anti-spark eff. G3	Acrylic corrugated efficiency G4	HEPA H13 ≥99,95% @ MPPS acc. to EN 1822:2009	17 kg activated carbon
MFU21HCO3BF0000	1,5 220/1/50Hz	1500	99,99 H13-HEPA	110	3	1,5 kW 220/1/50	17	metal anti-spark eff. G3	Acrylic corrugated efficiency G4	HEPA H13 ≥99,95% @ MPPS acc. to EN 1822:2009	17 kg activated carbon

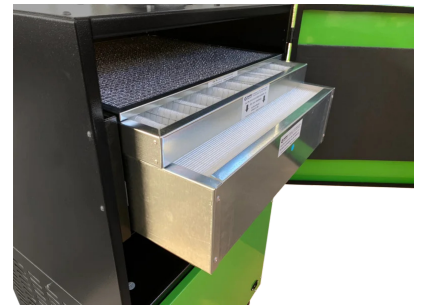


## Technical Data

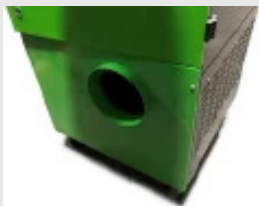
Code	Power kW	Nominal flow rate m <sup>3</sup> / h	Filtering efficiency %	Weight kg	Arm length meters	Motor	Activated carbon kg	Stage 1 filter	Stage 2 filter	Stage 3 filter	Stage 4 filter
MFU21HCO0000000	1,5 220/1/50Hz	1500	99,99 H13- HEPA	110	2	1,5kW 220/1/50Hz	17	metal anti- spark eff. G3	Acrylic corrugated efficiency G4	HEPA H13 ≥99,99% @ MPPS acc. to EN 1822:2009	17 kg activated carbon



## Photogallery



## Accessories



### Filtered air outlet connection MFU

KITSCARICESTMFU

Lateral connection diam. 200 mm for hose to discharge filtered air outside from MFU purifiers all.



### 17kg activated carbon filter kit for MFU

MFU21WECA170001

Replacement filter kit for 17 kg activated carbon filter stage - for all MFU purifiers from 2021 onward. Refillable version.



## Spare parts



### Metal Filter Replacement - Stage 1 - MFU-HW

Metal Filter Replacement - Stage 1 - MFU-HW only



### Replacement acrylic filter - Stage 2 - MFU-HW

Replacement acrylic filter - Stage 2 - MFU-HW only



### Replacement filter H13 HEPA - Stage 3 - MFU-HW

Replacement H13 HEPA filter - Stage 3 - MFU-HW only



### MFU-HC carbon filter replacement filter

Replacement filter 17 kg activated carbon filter in refillable version - MFU-HC / HCO only



## Related products



### MFV193R mobile activated carbon extractor

MFV1913R0000000

The **MFV19** series mobile activated carbon extractor cleaner is the ideal solution for suction and filtration of VOC / VOC fumes generated by paint touch-ups or other professional operations such as gluing, resin-coating or manual solvent cleaning, so as to limit their spread, in compliance with environmental and occupational safety regulations.

