

ESAT high-pressure welding fume extractor

🔧 Sectors [Welding](#),

🔧 Applications: [Mobile](#)

🔧 Issues [Fumes](#)

COD: ESAT000000000000



High-pressure vacuum cleaner ESAT, to be connected to max. 2 suction torches of the SAT line, specifically for industrial use in continuous operation (100% duty cycle) thanks to the robust aluminium blower/turbine with three-phase motor of leading brand. Mounted on trolley with wheels.

Detailed description

Ideal solution for one or two welding stations and re-introduction of fumes into the environment (where permitted due to the 98% filtration degree at 0.3 μ in class 10) or directly with expulsion to the outside.

Technical features

- max. 2 torches simultaneously
- Power 2200Watt 400/3/50
- Flow rate 240mc/h
- Noise level 71dbA
- Dimensions 500b x 600h x 650p

Automatic activation during arc ignition makes it fully automatic without loss of time.

In the case of a centralised extraction system, in view of the very low air flow rate, the exhaust of this extractor can be connected directly to the system with the advantage of not having to report new chimneys to the atmosphere.

Wall-mounted version on request.



Dimensions

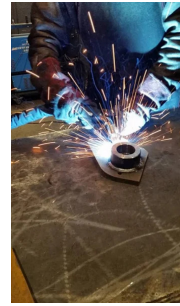
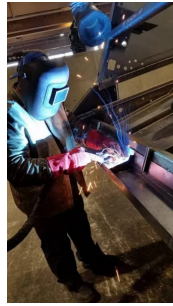
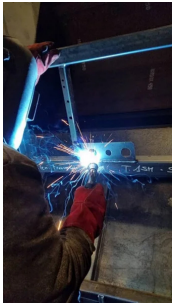
Code	b mm	h mm	P mm
ESAT000000000000	500	600	650

Technical Data

Code	Power W	Nominal flow rate m ³ / h	Useful pressure Pa	Weight kg	Noise level dB
ESAT000000000000	2200 400/3/50 three-phase	240	20000	58	71



Photogallery



Related products



High pressure welding fume extractor GTC1A22

GTC1A2200000000

GTC1A22 mobile welding fume extractor with integrated micrometric abatement filtration, for optimum high-pressure fume extraction through two simultaneous welding suction torches or from other applications requiring low-section piping.

