

## SDC activated carbon extractor

🔧 Sectors **Painting, Plant Components,**

🔧 Applications: **Fix**

🔧 Issues **VOC fumes, Odours**

COD:

SDC00000000000000



The **SDC** series activated carbon module is designed for abatement of **VOC/COV fumes and odors** generated by professional operations such as painting, gluing, resin coating or manual solvent cleaning, so as to limit their spread, in compliance with environmental and occupational safety regulations.



## Detailed description

The SDC series activated carbon purifier is produced in 6 different models all complete with support feet and three filter stages, with high quality virgin vegetable activated carbon final.

### Construction

- Supporting structure made of aluminum profiles, equipped with feet
- Galvanized steel closing panels (painted on request)
- Front door for maintenance and replacement of filter cartridges.

### Filtration

**SDC activated carbon** purifiers are complete with three filter stages:

#### STAGE 1

Filter composed of galvanized sheet metal, two corrugated meshes of electro-welded galvanized steel wire that contain the filter fabric and ensure adequate mechanical strength and filter protection.

Efficiency class (CEN EN779): G4

Group efficiency EN ISO 16890:2016 GROUP ISO ePM10 50% (ePM1 8% - ePM2.5 17% - ePM10 53%)

Average gravimetric efficiency: 90%

Reaction to fire (DIN53438): class F1

#### STAGE 2

15 mm thick synthetic filter placed inside the activated carbon cartridges.

Average weight efficiency (Am): 82%

Grammage: 160 gr/m<sup>2</sup>

Temperature resistance: 100 °C

Dust accumulation 482 gr/m<sup>2</sup>

Reaction to fire (DIN53438): class F1

#### STAGE 3

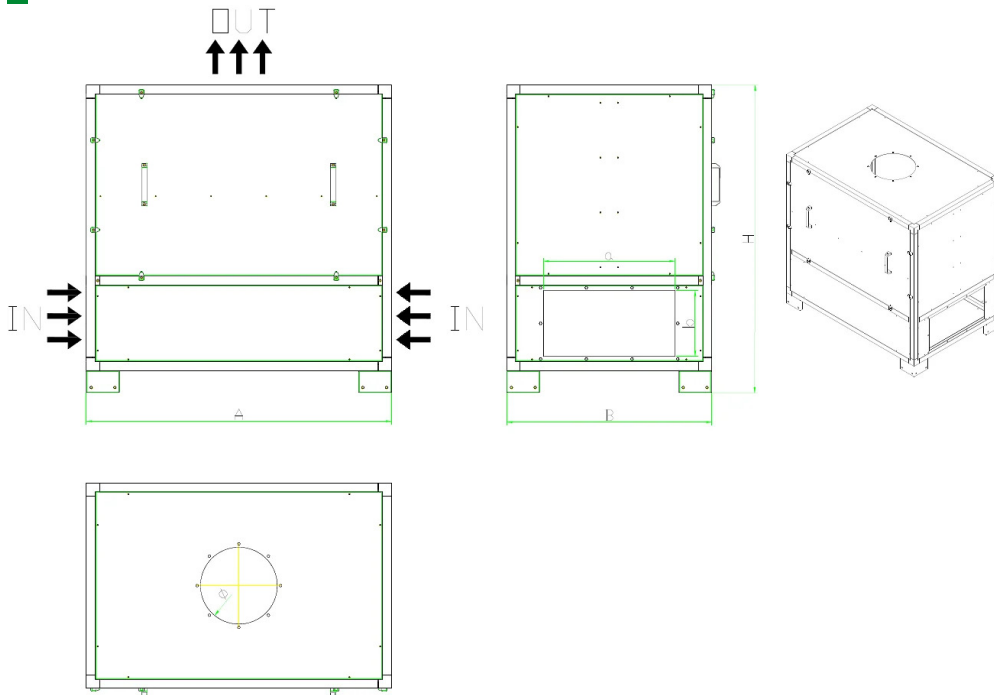
Cartridges made of concentric cylinders of micro-stripped sheet metal and closed at the ends by galvanized sheet metal end caps. The cartridges are filled with mineral-based charcoal drawn in 4-mm cylinders designed especially for physical absorption in the gaseous phase of volatile organic substances. The cartridges are easily opened for replacement of spent activated carbon.

Accessories and options upon request

- Activated carbon for specific exhalations
- Painted structure
- AISI structure



## Dimensions



Code	A mm	a mm	B mm	b mm	H mm	ØD mm	Ø mm
SDC028000000000	800	250	450	120	1000	200	350
SDC056000000000	800	450	800	150	1210	300	350
SDC084000000000	1390	600	925	300	1400	350	350
SDC011200000000	1390	600	1315	300	1520	400	350
SDC016800000000	2000	1200	1315	300	1520	500	350
SDC022400000000	2000	1200	1910	300	1520	600	350



## Technical Data

Code	Power kW	Nominal flow rate m <sup>3</sup> / h	Coal kg	Cartridges num.
SDC028000000000	28	2		
SDC056000000000	2,2	2200	56	4
SDC084000000000	3300	84	6	
SDC011200000000	4400	112	8	
SDC016800000000	6600	168	12	
SDC022400000000	8800	224	16	



## Spare parts



### CA25 bag with 25 kg virgin granular activated carbon

Bag containing **25 kg** of new, unregenerated, mineral-dusted **granular activated carbon in cylinders**, selected for the purification of air from volatile organic solvents, VOCs or deodorisation.



## Related products



### SDCA activated carbon extractor

SDCA000000000000

The **SDCA** series activated carbon vacuum cleaner is designed for the extraction and abatement of **VOC/COV fumes and odors** generated by paint touch-ups or other professional operations such as gluing, resin coating or manual cleaning with solvents, so as to limit their spread, while complying with environmental and occupational safety regulations.



### SAPC activated carbon filter module

SAPC000000000000

The **SAPC** series activated carbon filter module is to be used for abatement of odors and organic compounds in extraction systems, such as in industrial kitchens, air treatment plants and for deodorization in general.

