

MFU-HWF23 welding fume extractor double arm 3m

- 📌 Sectors [Welding,](#)
- 📌 Applications: [Mobile](#)
- 📌 Issues [Fumes](#)

COD:

MFU21HW32F00000



Mobile welding fume extractor with superflex double arm, with filtration efficiency H13 99.99%.



Detailed description

The **MFU-HWF23 portable welding fume extractor** is designed for the extraction and filtration of fumes and micro-dust generated during metal welding processes.

Thanks to its compact size, wheels and handles, it can be easily moved to the vicinity of the work to be done and then suck up the fumes using the various accessories available.

This version, thanks to the two suction arms, can serve two welding stations alternately (either work one or the other) by acting on the closing dampers located on the suction hood.

ADVANTAGES

- Fast fume extraction near the source due to the high flow rate
- Mobile: allows a variety of welding spots to be reached
- Filtration with absolute filter eff. H13 $\geq 99.95\%$
- 1500W single-phase power can be connected anywhere with a simple shuko outlet
- Compact and handy structure;
- Professional filtration eff. H13 HEPA - 99.99% compliant for re-entry of air into the room;
- On-board electrical panel with filter clogging warning and hour meter as per EN 15102;
- Single-phase plug and cable with normal shuko socket does not require ready-to-use electrical systems;
- Double SUPERFLEX self-supporting suction arm (alternate) working radius mt 3
- High-capacity hood, handle for easy positioning, and airflow setting or closing damper on each individual arm.

How it works

The welding fume purifier sucks pollutants from the arms as they pass through the system downward and are purified to 99.9% efficiency with 3 different stages of filtration.

At this point, the clean air is fed back into the environment through grilles located down the sides of the machine.

Safety and EN standards

The clogging level of the filters is monitored by a control that alerts with a light signal when the filters need to be cleaned or replaced, so as to avoid continuing work without air filtration.

Technical Data

Nominal flow rate: 1,500 cu m/h

Motor power: 1.5kW 220/1/50

Total weight: 120 kg approx

3-stage filtration:

1. metal anti-spark filter eff. G3
2. acrylic filter eff. G4 in accordance with EN 779:2012
3. absolute filter eff. H13 $\geq 99.95\%$ @ MPPS in acc to EN 1822:2009

Construction

- Sturdy galvanized or painted steel supporting structure depending on the application, equipped with practical handles for handling and 4 pivoting wheels with brakes;
- Electrical panel with ventilation on/off control, hour meter and filter clogging warning light;
- Single-suction centrifugal fan in version directly coupled to single-phase asynchronous motor;





Advantages of buying with operational leasing in 12/24/36 or 48 convenient instalments

- No advance payments to be made, no pro-rata.
- First instalment on average at 30 days.
- Totally deducts rental fees for IRES purposes with no obligations arising from the minimum contract duration provided for by the T.U.
- Totally deducts royalties for IRAP purposes without distinction between capital and interest.
- Basel 2 advantage: thanks to the rental, the asset used is "off-asset" and therefore does not require corresponding assets.
- All-risk insurance included in the fees to cover possible claims.
- Fixed rate for the entire duration of the transaction.

Partner *BCC Lease*

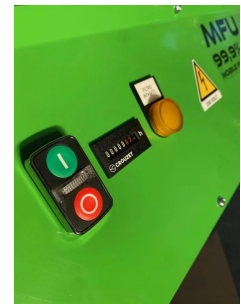


Technical Data

Code	Power kW	Power W	Nominal flow rate m ³ / h	Weight kg	Stage 1 filter	Stage 2 filter	Stage 3 filter
MFU21HW32F00000	1,5 220V/50	1500	1500	120	metal anti-spark eff. G3	acrylic efficiency G4 according to EN 779:2012	Absolute efficiency H13 ≥ 99.95% @ MPPS acc. to EN 1822:2009



Photogallery



Accessories



17kg activated carbon filter kit for MFU

MFU21WECA170001

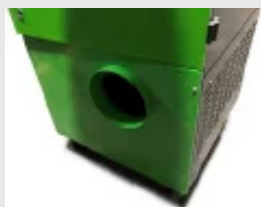
Replacement filter kit for 17 kg activated carbon filter stage - for all MFU purifiers from 2021 onward. Refillable version.



10kg activated carbon filter kit for MFU and WFU

MFU18WECA100000

10kg (2x5kg) activated carbon filter kit for all WFUs and MFUs 16 -18 - HW



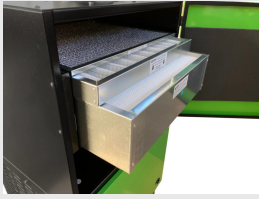
Filtered air outlet connection MFU

KITSCARICESTMFU

Lateral connection diam. 200 mm for hose to discharge filtered air outside from MFU purifiers all.



Spare parts



Replacement filter kit S1-S2-S3 (no carbon) - for MFU-HW

Replacement filter kit S1-S2-S3 (no carbon) for MFU-HW all



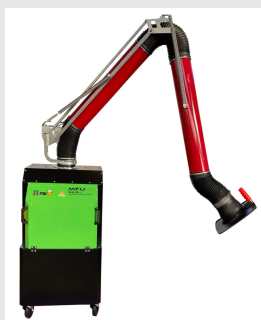
Related products



MFU-HW welding fume extractor with superflex arm

MFU21HWXF000000

Mobile extractors for welding fumes and micro-dust, high performance for professional use, with HEPA H13 99.99% absolute filtration



MFU-HW welding fume extractor with red arm

MFU21HWR0000000

Mobile extractors for welding fumes and micro-dust, high performance for professional use, with HEPA H13 99.99% absolute filtration

