

# Wall-mounted welding fume extractor WFU with rigid arm

📌 Sectors [Welding,](#)

📌 Applications: [Fix](#)

📌 Issues [Fumes](#)

COD:

WFU18BR00000000

Wall-mounted welding fume extractor WFU18 filtration efficiency H13 99.99%.



## Detailed description

The WFU18 wall-mounted welding fume extractor is the ideal solution for extracting and filtering fumes and micro-dust generated during metal welding processes.

Due to its compact size, it can be easily installed on the wall or on a column, close to the location that produces welding fumes.

See the blog article for more information.

The welding fume suction arm, provides a working radius of about 3 mt from the installation position of the purifier (also available with mt4 arm )

### HOW IT WORKS

The purifier quickly draws in welding fumes from the self-supporting arm, which enter the filter body and are purified to 99.9% efficiency with 3 different stages of filtration.

At this point, the cleaned air is fed back into the environment through grilles located in the sides of the machine.

### Environmental safety and certification

As required by European regulations and some Italian regions (e.g., Lombardy), the level of clogging of the filters is monitored by a control that warns with a light signal on the electrical panel when it is necessary to clean or replace the filters of the welding fume purifier, so as to avoid continuing without air filtration.

### Technical Data

Nominal flow rate 1,500 mc/h

Motor power 1.5kW 220/1/50

Unit dimensions (Without arm): mm. 640x650x1050 H

Total weight 150 kg approx

### STRUCTURE

- Compact structure and easy to install on wall or column(brackets included in kit)
- Filtration with H13 HEPA efficiency - 99.99% compliant for re-entry of air into the room (class W3)
- Electrical panel provided in the kit installable on wall or column with filter clogging signal as per EN 15102;
- Self-supporting suction arm with hood and handle for easy positioning, diameter 160mm, length 3 or 4 m red rigid

### Filtration detail

stage 1: metal anti-spark filter eff. G3

stage 2: acrylic filter eff. G4 according to EN 779:2012

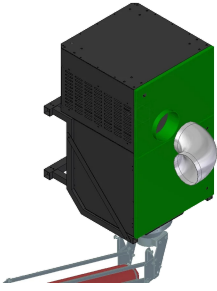
stage 3: absolute filter eff. H13  $\geq 99.95\%$  @ MPPS in acc to EN 1822:2009

### Standard equipment

Brackets for wall or column mounting

CE-compliant electrical panel with ventilation on/off control and filter clogging warning light





## Dimensions

Code	Dimensions mm
WFU18BR30000000	640x650x1050 H (without arm)
WFU18BR40000000	640x650x1050 H (without arm)

## Dimensions

Code	A mm	B mm	H mm
WFU18BR00000000	640	650	1050

## Technical Data

Code	Power kW	Nominal flow rate m <sup>3</sup> / h	Weight kg	Dimensions mm	Arm length meters	Stage 1 filter	Stage 2 filter	Stage 3 filter
WFU18BR30000000	1.5kW 220V/50Hz	1500	150	640x650x1050 H (without arm)	3	metal anti-spark filter eff. G3	acrylic filter eff. G4 in accordance with EN 779:2012	absolute filter eff. H13 ≥99.95% @ MPPS in acc to EN 1822:2009
WFU18BR40000000	1.5kW 220V/50Hz	1500	150	640x650x1050 H (without arm)	4	metal anti-spark filter eff. G3	acrylic filter eff. G4 in accordance with EN 779:2012	absolute filter eff. H13 ≥99.95% @ MPPS in acc to EN 1822:2009

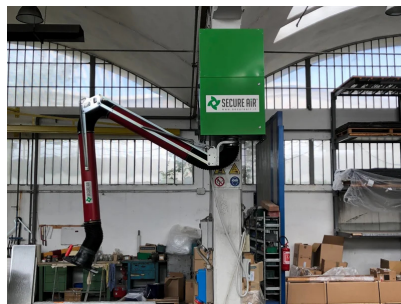
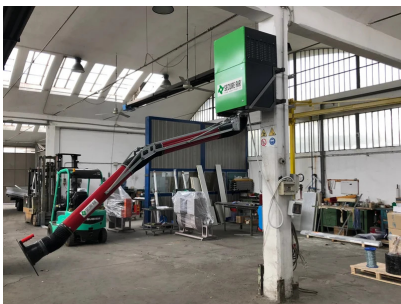
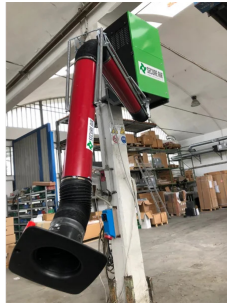


## Technical Data

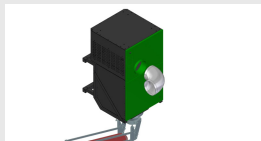
Code	Power kW	Nominal flow rate m <sup>3</sup> / h	Filtering efficiency %	Weight kg	Dimensions mm	Arm diameter mm	Stage 1 filter	Stage 2 filter	Stage 3 filter
WFU18BR00000000	1,5 kW 220/1/50	1500	99.99 H13- HEPA	150	640x650x1050 H (without arm)	160	Metal non- sparking filter eff. G3	Acrylic filter eff. G4 according to EN 779:2012	Absolute filter eff. H13 ≥99.95% @MPPS acc. to EN 1822:2009



## Photogallery



## Accessories



### Outdoor air exhaust kit WFU

KITESPESTWFU000

#### Outdoor air exhaust kit

- Side connection diam. 200mm for flexible hose for exhausting filtered air from WFU and MFU purifiers outside all.
- Thanks to this hose attachment, filtered air from WFU purifiers can be expelled into a rigid hose (not included) so that it is not fed back into the environment.
- Can only be ordered during machine set-up, NOT as a later kit.



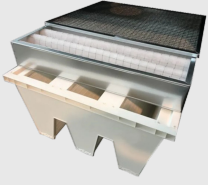
### 10kg activated carbon filter kit for MFU and WFU

MFU18WECA100000

10kg (2x5kg) activated carbon filter kit for all WFUs and MFUs 16 -18 - HW



## Spare parts



### Replacement filter kit S1-S2-S3 WFU purifier

Replacement filter kit S1-S2-S3 (no carbon) for WFU hanging purifier

